

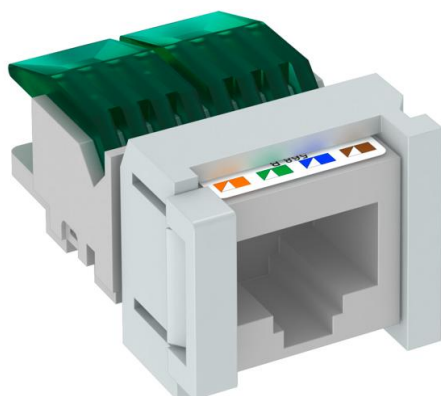
Technical data sheet

Connection module Cat. 5E, unshielded, snap-in

Item number: 6117347



Connection module Cat. 5E unshielded, with a RJ45 slot. Including a dust cover, a cable tie, a snap-in fastening frame and mounting instructions. Suitable for installation in support plates, type MTM 2C and MTM 3C, mounting plate type MPR2 2C, mounting support type MTGE2 2C, MTGE2 15 2C and MTGE2 F 2C.



CE

Master data

Item number	6117347
Type	ASM-C5 S
Description 1	Connection module CAT5 snap-in
Description 2	unshielded
Manufacturer	OBO
Smallest sales unit	1
Unit of quantity	Piece
Weight	1.12 kg
Weight unit	kg/100 pc.

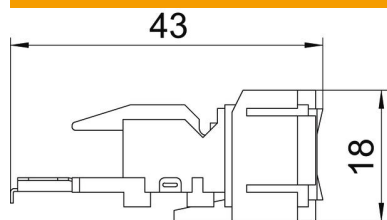
Technical data sheet

Connection module Cat. 5E, unshielded, snap-in

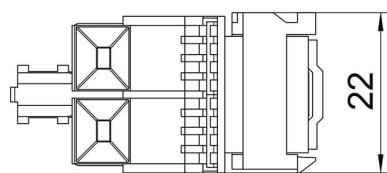
Item number: 6117347



Dimensions



Length	43 mm
Width	22 mm
Height	18 mm



Technical data

Category	5E
Mounting opening	Type C