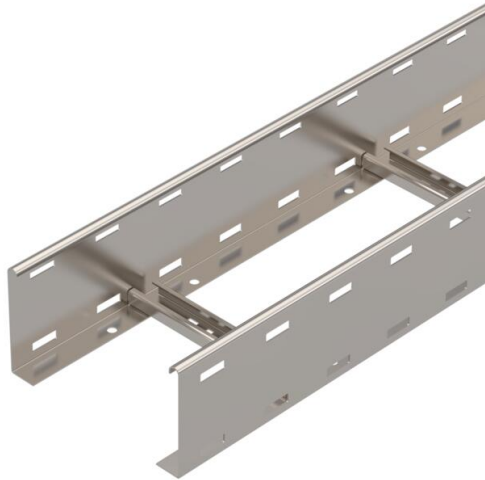


Technical data sheet

Cable ladder LG 110, 6 m VS A2

Item number: 6216492



Cable ladder with perforated side rail of side height 110 mm with riveted C profile rungs, open in an upwards direction. The cable ladder is shipped folded up.

You can find the appropriate U clamp of type 2056 in the vertical ladder systems chapter. Magnetic shield insulation without cover 10 dB, with cover 15 dB.



A2 Stainless steel

2B Bright, treated

Master data

Item number	6216492
Type	LG 112 VS6 A2
Description 1	Cable ladder
Description 2	perforated, with VS rung
Manufacturer	OBO
Dimension	110x200x6000
Material	Stainless steel
Surface	Bright, treated
Surface standard	
Smallest sales unit	6
Unit of quantity	Metre
Weight	377.666 kg
Weight unit	kg/100 m

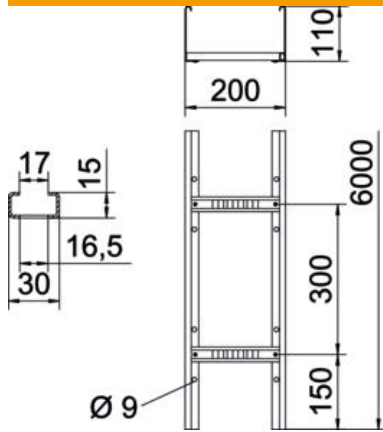
Technical data sheet

Cable ladder LG 110, 6 m VS A2

Item number: 6216492



Dimensions



Dimension	110x200
Length	6,000 mm
Length	6,000 ft
Width	200 mm
Height	110 mm
Dimension B	200 mm
Rung slot dimension	17.00

Technical data

Usable cross-section	188 cm ²
Usable cross-section	18800 mm ²
Rung distance	300 mm
Rail thickness	1.5 mm

Loads

Support spacing 2.0 m	3.1 kN/m
Support spacing 2.5 m	2 kN/m
Support spacing 3.0 m	1.3 kN/m
Support spacing 3.5 m	0.9 kN/m
Support spacing 4.0 m	0.6 kN/m
Support spacing 4.5 m	0.5 kN/m
Support spacing 5.0 m	0.45 kN/m