

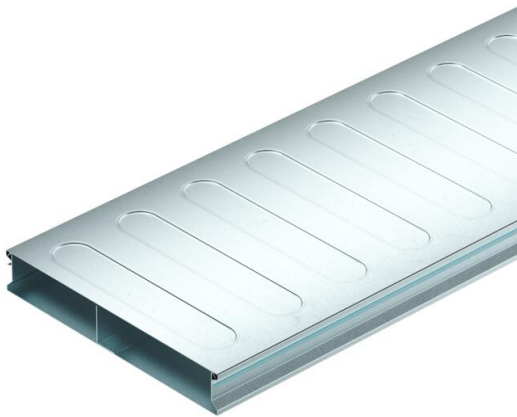
# Technical data sheet

Underfloor duct, 2 pieces, 2-compartment, duct height 38 mm

Item number: 7400267



Underfloor duct (2 piece) for routing cables in screed-covered underfloor systems, according to EN 50085-2-2. Removable and continuously lockable duct cover. With separating retainer in the duct base. The profiled side walls offer a locking mechanism to lock the duct cover onto the duct base. The stiffening beads in the duct cover serve to create stability.



- St** Steel
- FS** Strip galvanized

## Master data

Item number	7400267
Description 1	Underfloor duct, 2-part
Description 2	2 compartments
Manufacturer	OBO
Dimension	2000x250x38
Material	Steel
Surface	Strip galvanized
Surface standard	DIN EN 10346
Smallest sales unit	2
Unit of quantity	Metre
Weight	387.994 kg
Weight unit	kg/100 m

## Dimensions

Length	2,000 mm
Width	250 mm
Height	38 mm
Dimension a	110 mm
Dimension b	140 mm
Dimension h	38 mm

# Technical data sheet

Underfloor duct, 2 pieces, 2-compartment, duct height  
38 mm

Item number: 7400267



## Technical data

Number of fixed partitions	1
Number of compartments	2 St.
Mounting system fastening type	Floor
Floor plate	yes
Application area	Screed-covered
Decouplable	no
Trunking width, min.	250 mm
Duct height, min.	38 mm
Usable cross-section	8524 mm <sup>2</sup>
Removable cover	yes
Cross-section, draw a	3717 mm <sup>2</sup>
Cross-section, draw b	4807 mm <sup>2</sup>