

Technical data sheet

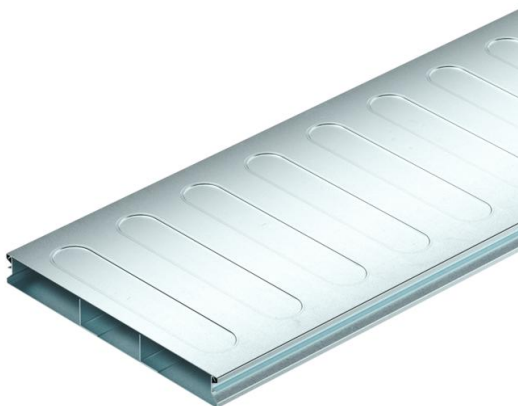
Underfloor duct, 2 pieces, 3-compartment, duct height 28 mm

Item number: 7400275



Underfloor duct (2 piece) for routing cables in screed-covered underfloor systems, according to EN 50085-2-2. Removable and continuously lockable duct cover. With separating retainer in the duct base.

The profiled side walls offer a locking mechanism to lock the duct cover onto the duct base. The stiffening beads in the duct cover serve to create stability.



St Steel

FS Strip galvanized

Master data

Item number	7400275
Description 1	Underfloor duct, 2-part
Description 2	3 compartments
Manufacturer	OBO
Dimension	2000x250x28
Material	Steel
Surface	Strip galvanized
Surface standard	DIN EN 10346
Smallest sales unit	2
Unit of quantity	Metre
Weight	395.812 kg
Weight unit	kg/100 m

Dimensions

Length	2,000 mm
Width	250 mm
Height	28 mm
Dimension a	90 mm
Dimension b	70 mm
Dimension h	28 mm

Technical data sheet

Underfloor duct, 2 pieces, 3-compartment, duct height
28 mm

Item number: 7400275



Technical data

Number of fixed partitions	2
Number of compartments	3 St.
Mounting system fastening type	Floor
Floor plate	yes
Application area	Screed-covered
Decouplable	no
Trunking width, min.	250 mm
Duct height, min.	28 mm
Usable cross-section	6130 mm ²
Removable cover	yes
Cross-section, draw a	2166 mm ²
Cross-section, draw b	1798 mm ²